

How to Wirelessly Surf the Internet on your



Handheld via Bluetooth™

For Windows XP RAS

Version 1.2

February 14, 2003

Compiled By Troy Fontaine

Original Instructions by

Mikael Östergren (iorx)

&

Michael Lynch (TinMan)

From the

www.palminfocenter.com

forums

All trademarks and logos contained herein are copyright and property of their respective companies. This publication was not authorized by Palm Inc. ® or by Palm Infocenter ©. I hope for the service this offers, no one will sue me.

Table of Contents

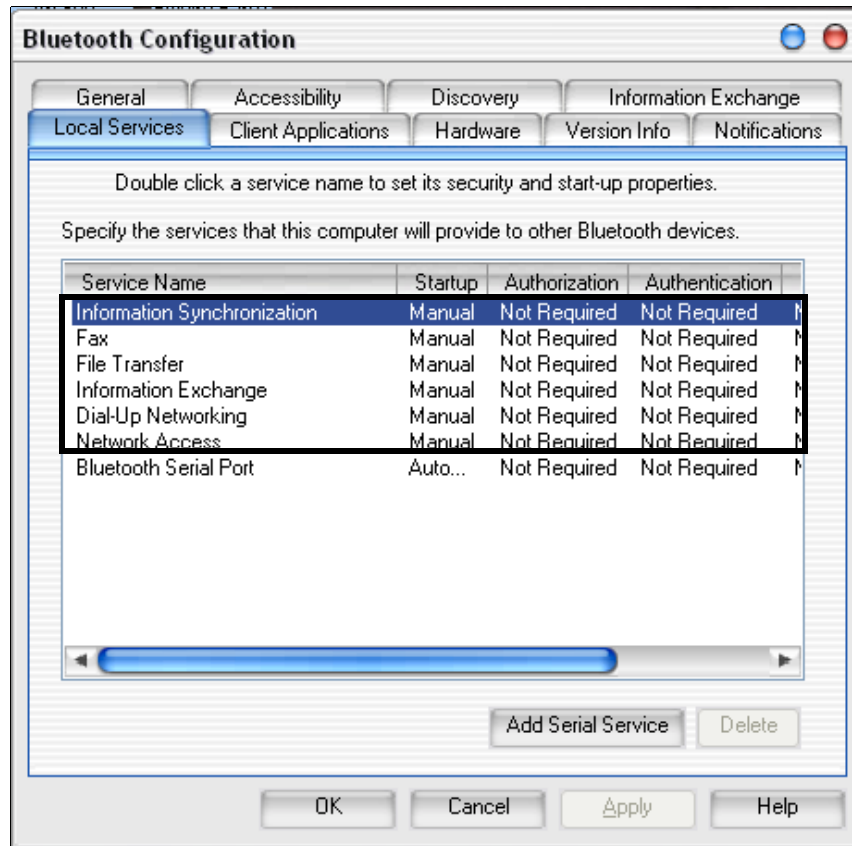
Section 1: Desktop Configuration	3
Section 2: Configuring your Tungsten™ T™	10
Section 3: How to Network Sync™ over Bluetooth	14
Troubleshooting	18

Section 1: Desktop Configuration

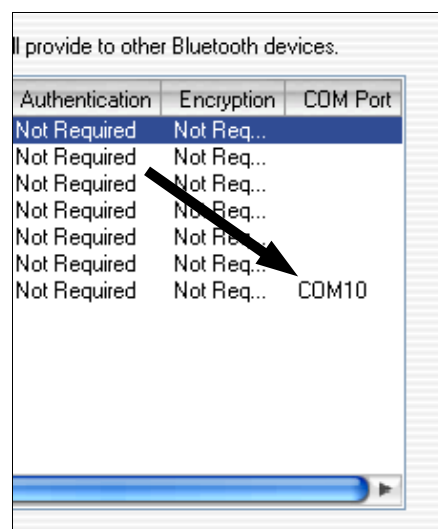
This section instructs you how to configure your desktop. This is the basic configuration that works for most people with broadband internet connections, or LANs that use DHCP to assign IP addresses.

If your LAN uses manual IP addresses, you will need to find an open IP for your Tungsten (check with your Network Administrator) and follow the steps in the **Troubleshooting** section on how to configure your desktop to allow for your handheld to have a manual IP.

Step 1: Go into your Bluetooth Software and set all of the Local Services except Bluetooth Serial Port to manual.

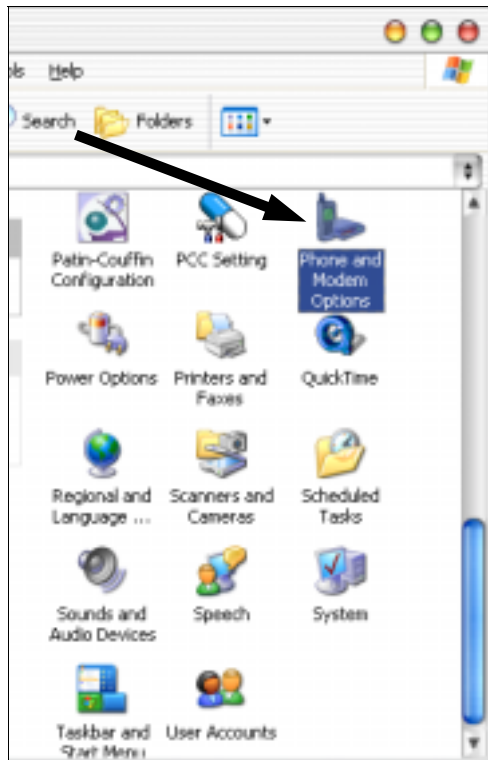


Take note of which COM port that the Bluetooth Serial Port driver is set to.

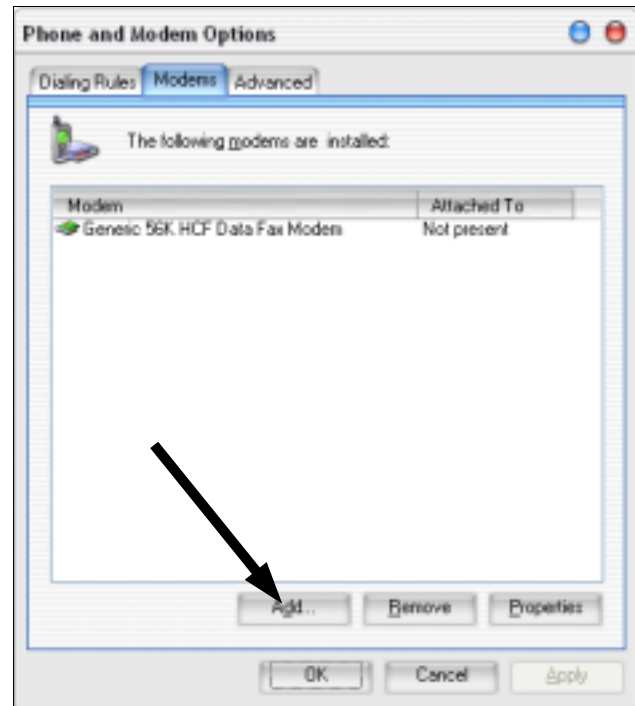


Step 2: Go into Client Applications in the configuration software, and delete Bluetooth Serial Port.

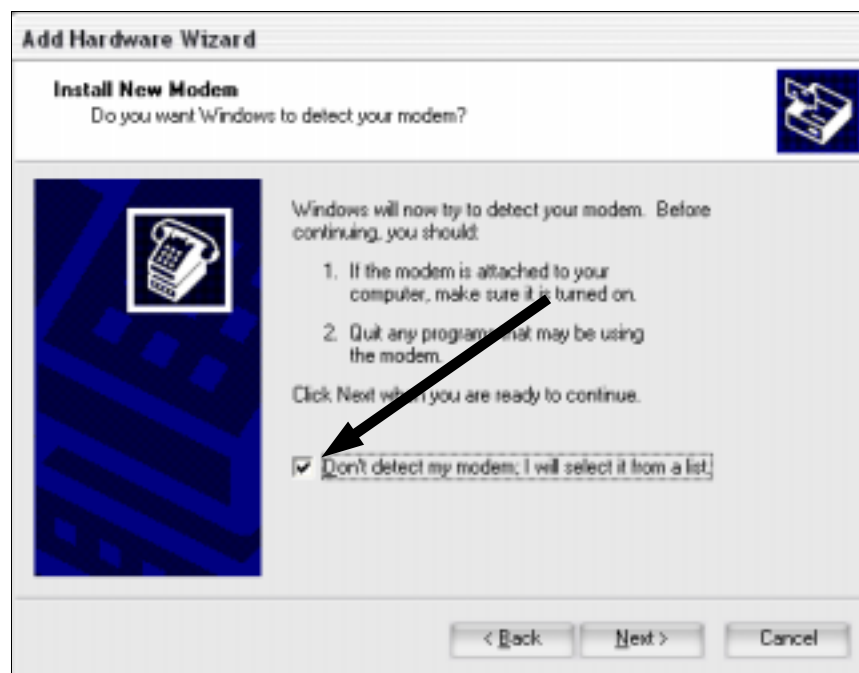
Step 3: Go to Control Panel. Then go to Phone and Modem Options.



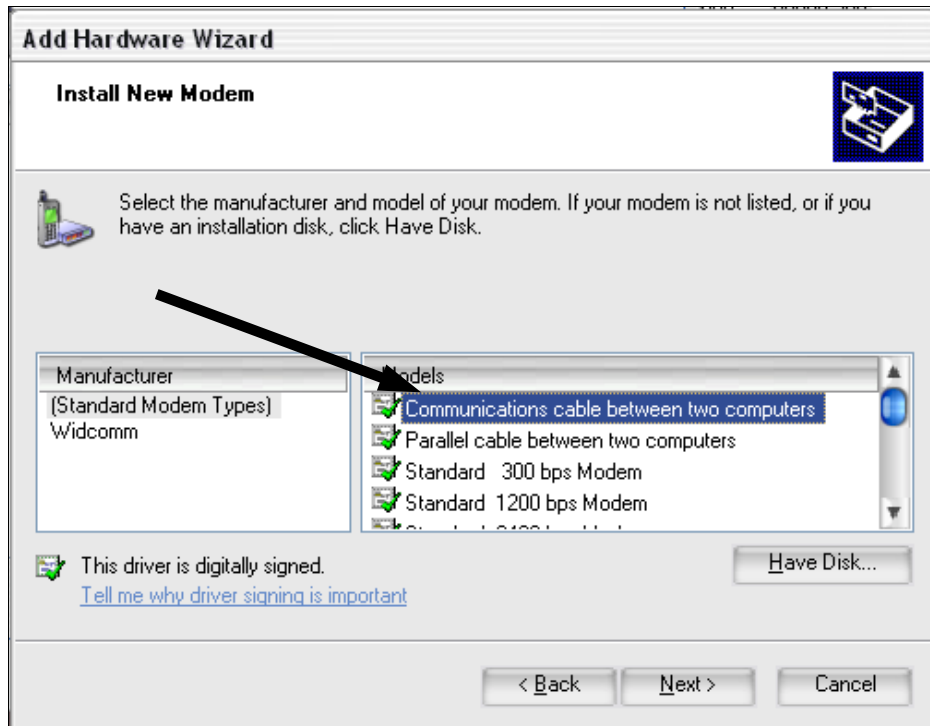
Click on the Modems Tab.



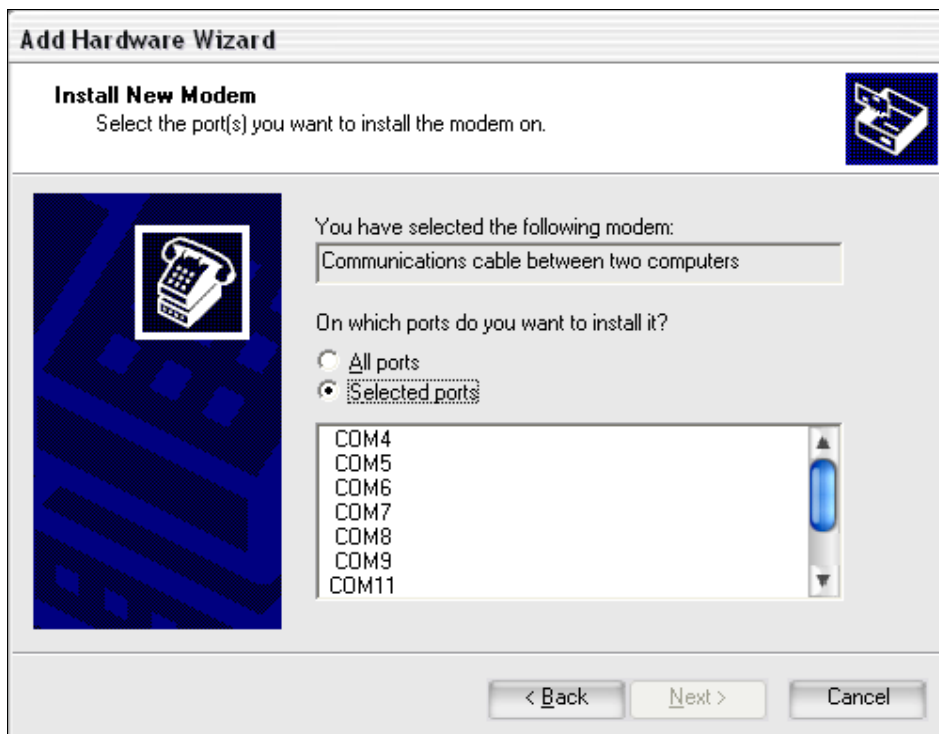
Step 4: Click on Add. Check the "Don't Detect my modem; I will select it from a list." Then click "Next."



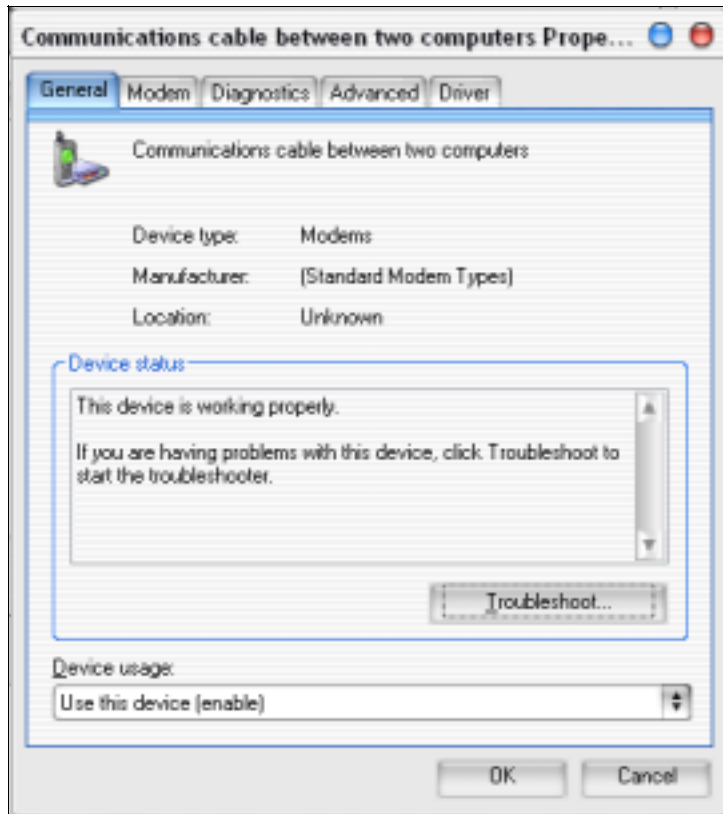
Step 5: Under (Standard Modem Types), choose "Communications cable between two computers, then click "Next."



Step 6: Choose the COM port of the Bluetooth Serial Port driver that we noted earlier.

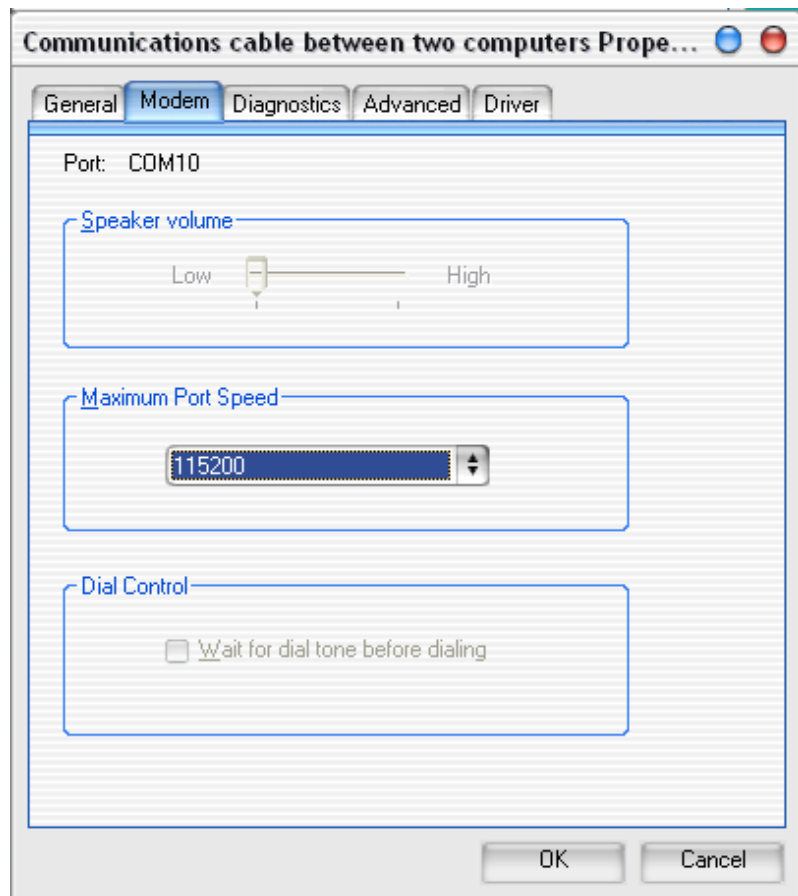


Then just click "Next." Once it finishes installing the "modem", click "Finish."

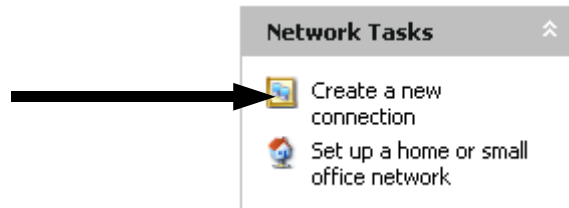


Step 7: Now go into Phone and Modem properties, and click on the Modems Tab. Once in there, double click on the "Communications cable between two computers" to bring up it's properties.

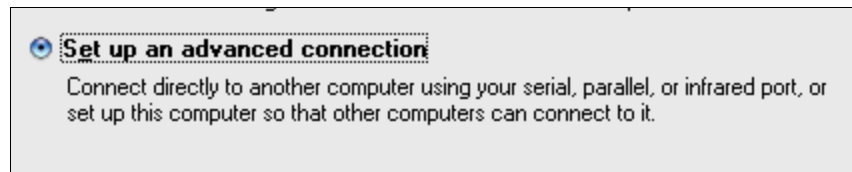
Step 8: Click on the Modem tab and set the maximum port speed to 115200.



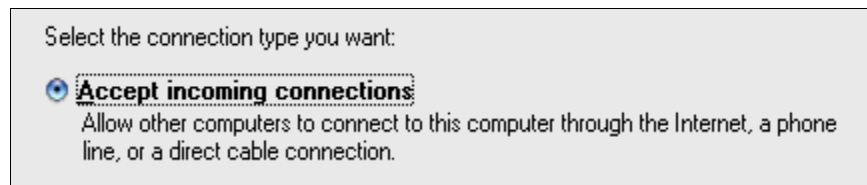
Step 9: Go into Network Connections and go to Create a new connection



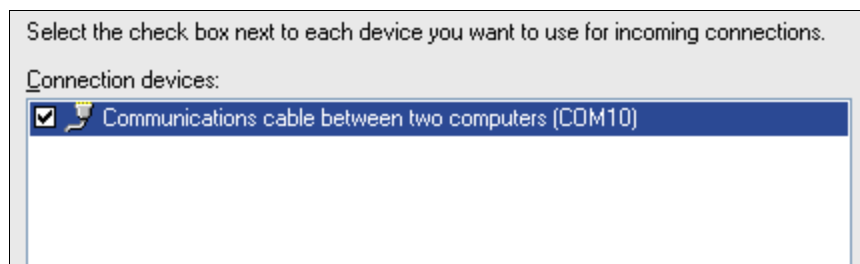
Step 10: Click next at the first dialog, in the next one, choose Setup an advanced connection then click next.



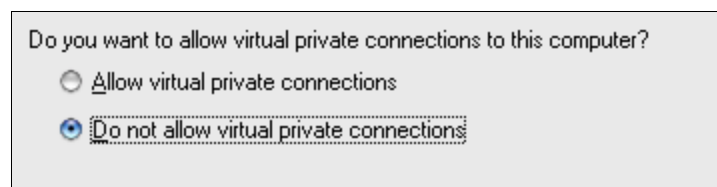
Step 11: Choose Accept incoming connections.



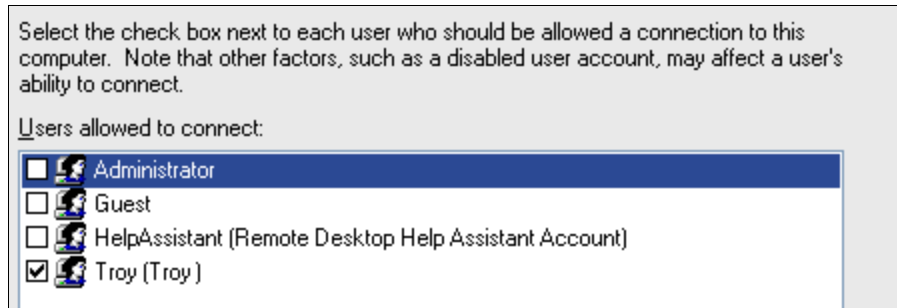
Step 12: Check off the "Communications cable between two computers", then click next.



Step 13: Make sure that "Do not allow virtual private connections" is selected. Then click next.



Step 14: You need to select the users who will have permission to log on through this connection. So you must have a user login with a password for this method to work properly (you may create the login after setup is complete and return to the connections properties to edit these settings).



Step 15: Click next for the next screen, and this will bring you to the finish screen. Congratulations, you've finished the necessary steps to setup your desktop. All that is left is to restart your computer.

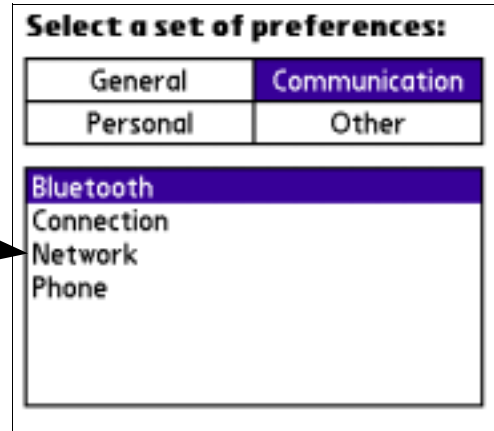
Section 2: Configuring your



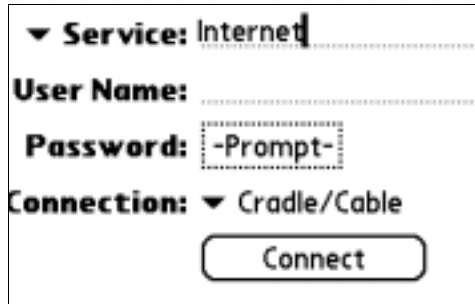
Here you will learn how to configure your handheld to work with the connection you created in Section 1. This is the basic configuration that works for most people with broadband internet connections, or shared internet connections from another computer or router.

If your LAN uses manual IP addresses, you will need to find an open IP for your Tungsten (check with your Network Administrator) and follow the steps in the **Troubleshooting** section on how to configure your handheld to use a manual IP.

Step 1: Go into Prefs and Communication.

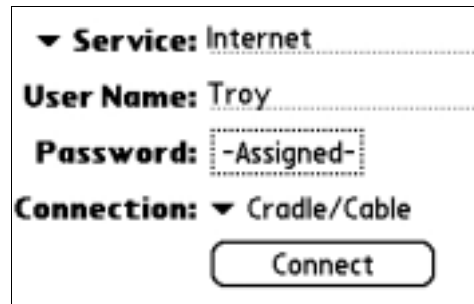


Step 2: Select Network.

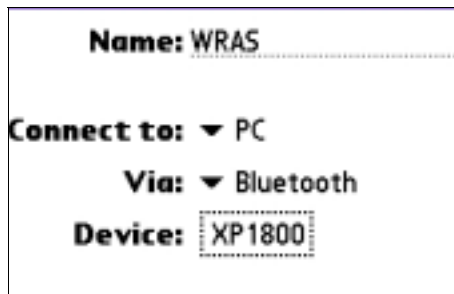


Step 3: Now create a connection, naming it something. For my example, I'm going to use Internet.

Step 4: Fill in the User name and password



Step 5: Go to Connection, and choose edit connections, tap New



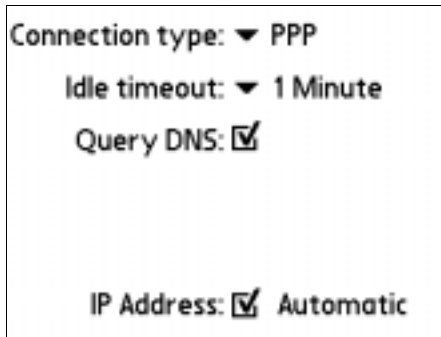
Step 6: Name the new connection "WRAS", under "Connect to" choose PC then tap "Via" and select Bluetooth. Then tap "Tap to find" and choose the computer you want to connect through.

Step 7: Tap Details and change the speed to 115,200 bps



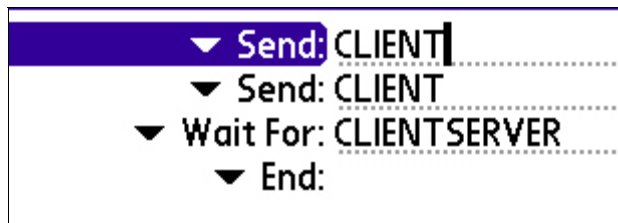
Step 8: Tap "Ok", and 'Ok' again, then tap Done to return to the Network connection window

Step 9: Select the connection we just created, then tap "Details", make sure the "Connection type" is "PPP", the idle timeout is "Never" and that "Query DNS" and "IP Address" are both checked.



Step 10: Now tap Script and tap End, choose Send then make the script look like this.

Send: CLIENT
Send: CLIENT
Wait for: CLIENTSERVER
End:



Congratulations!
You have now finished setting up
wireless access to
the internet through Bluetooth for your
Palm™ Tungsten™ T PDA.

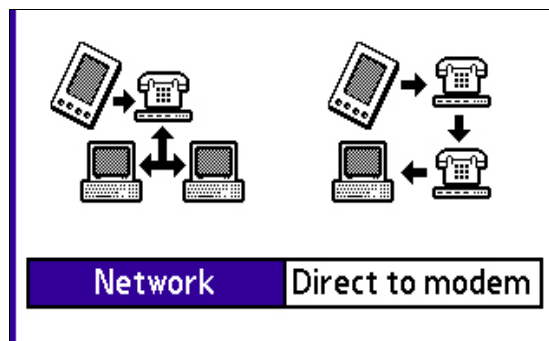
Section 3: How To Network Sync™ over Bluetooth™

This section instructs you how to configure your handheld to Network Sync™ over the Bluetooth™ connection you created.

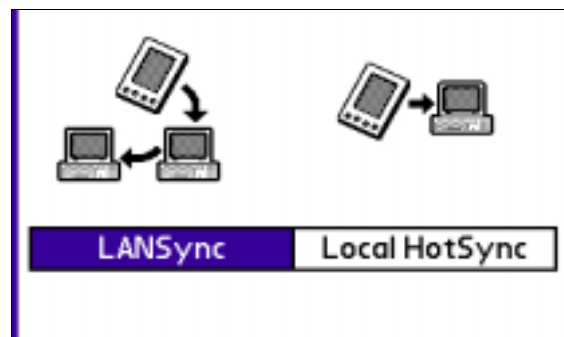
Step 1: On your Tungsten, go to the HotSync App. Set Modem Sync Preferences to "Network"



Step 2: Set Modem Sync Preferences to "Network"



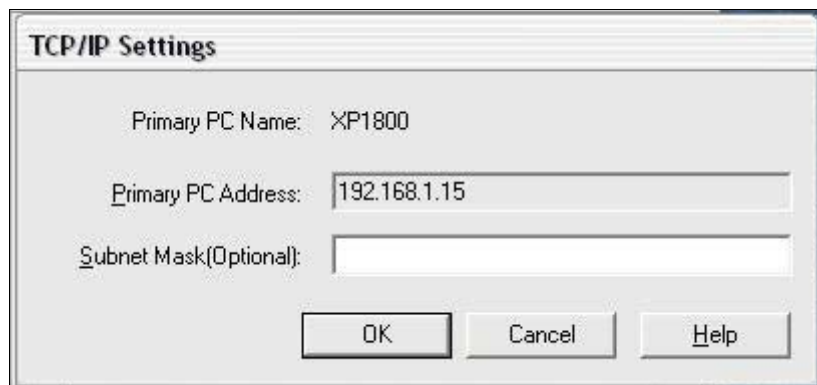
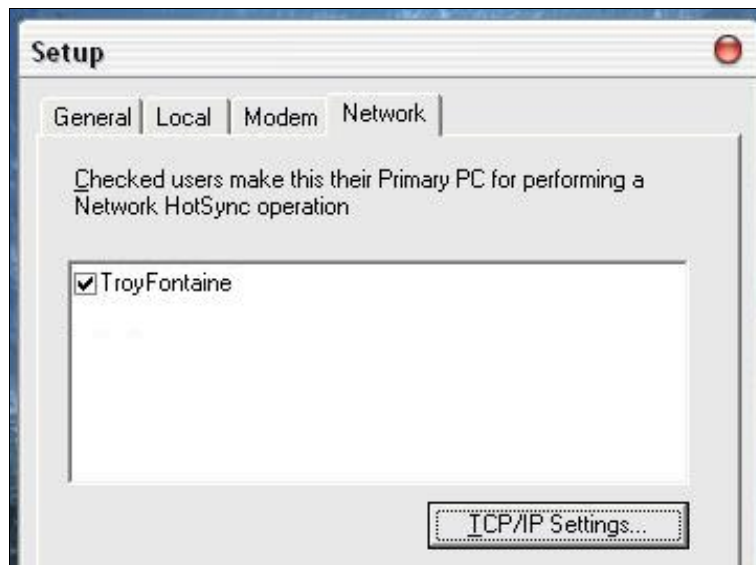
Step 3: Under LanSync set it to "LanSync"



Step 4: On your desktop, right click on the hotsync icon in the system tray and click on Network.



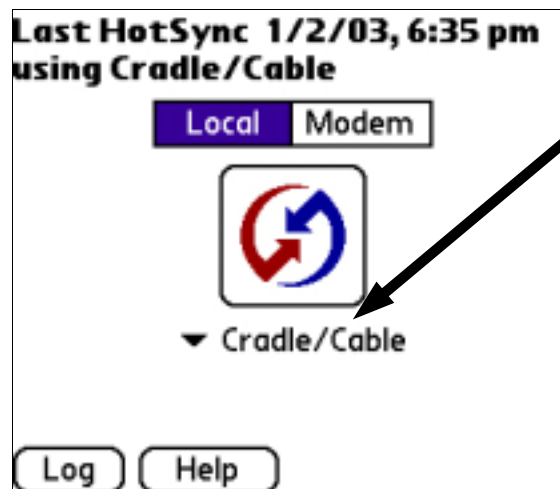
Step 5: A dialog box will pop up asking you to choose a user to network hotsync and to configure the TCP/IP settings



Step 4: Once your desktop is configured, the necessary Primary PC information will be sent to your Tungsten on the next HotSync. Please Note: Due to a bug in the current version of Network HotSync (Version 4.0) it is necessary before every HotSync to delete the Primary PC Name.

Primary PC Name:
Primary PC Address: 192.168.1.15
Subnet Mask(optional): 255.255.255.0

Step 5: At the main HotSync screen choose "Modem".



Tap the choose network area. Choose the connection you created earlier.

Step 6 (Optional): If you would like to Network HotSync through a firewall, configure your firewall to allow traffic through TCP port 14237 and UDP port 14238. If using a router, follow its instructions on how to forward those ports to the desktop that you wish to HotSync with.

Congratulations, you have now finished configuring your Tungsten to network HotSync.

Troubleshooting: A Variety of Tricks

In this section, we'll go over several settings on the desktop and the handheld attempting to solve any connection problems that may be occurring.

Troubleshooting Table of Contents

If at this point your connection does not work, it may be due to several factors. If you are using a Router, you may have to manually assign an IP to your handheld.

How to manually assign an IP address to your Tungsten 20

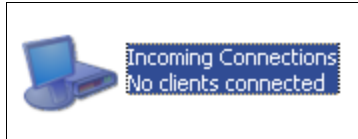
If it still does not work, you can try to set the Tungsten's DNS settings.

How to set your Tungsten's DNS addresses 22

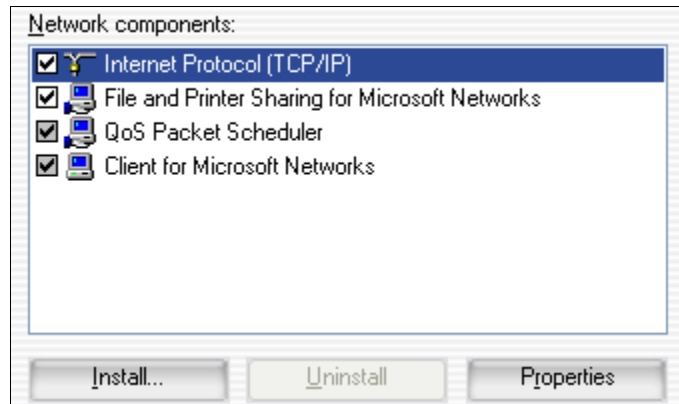
If at this point your connection does not work, it may be due to several factors. If you are using a Router, you may have to manually assign an IP to your Palm (and/or the DNS's IP). If your ISP does not automatically assign IP addresses (DHCP) or allow you to use more than 1 IP address, then you may be unable to utilize RAS without a Router. Some people have reported issues relating to their router being incompatible with the RAS method, the only method to determine which one works though is by trial and error.

How to manually assign an IP address to your Tungsten T™

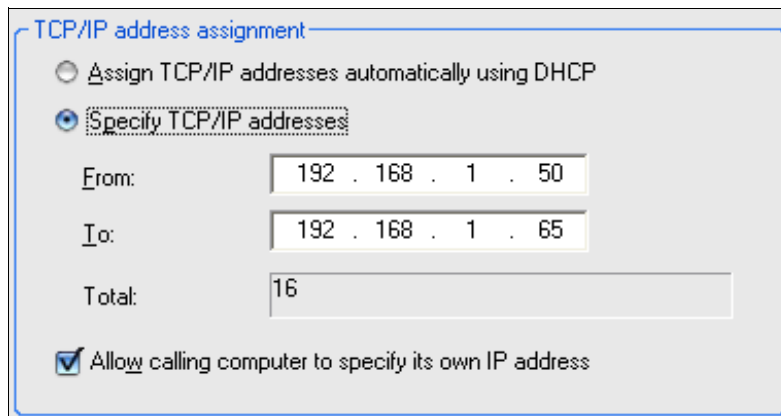
Step 1: Go to Network Connections, right click Incoming Connections and go to Properties



Step 2: Click on the Networking Tab, and click on Internet Protocol (TCP/IP) then click on Properties.



Step 3: Click on "Specify TCP/IP addresses and set a few aside for the Palm. As well, check off "Allow calling computer to specify its own IP address".



Restart Windows.

Step 4: On your Tungsten™ T, go to 'Prefs', "Communication" and then Tap on "Network".

Step 5: Choose your Bluetooth Connection, and tap "Details".

Step 6: Uncheck 'IP Address Automatic" and then enter an IP address that is within the range you set in the "Incoming connections" TCP/IP configuration.

How to set your Tungsten TTM's DNS addresses

Step 1: To determine your DNS's IP address go to Network Connections and right click on your Internet connection, and choose "Status."

Step 2: Click the tab labeled "Support." Next, click on "Details" Write down the DNS IP addresses.